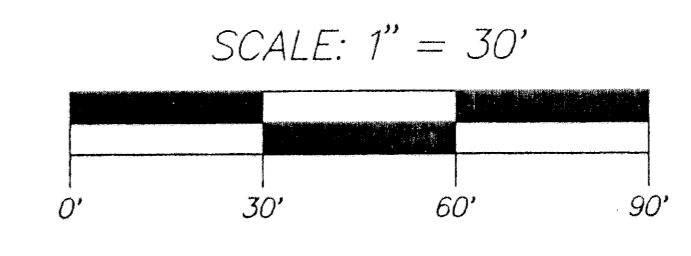


ROYAL COMMERCIAL PARK OF DELRAY PLAT 2

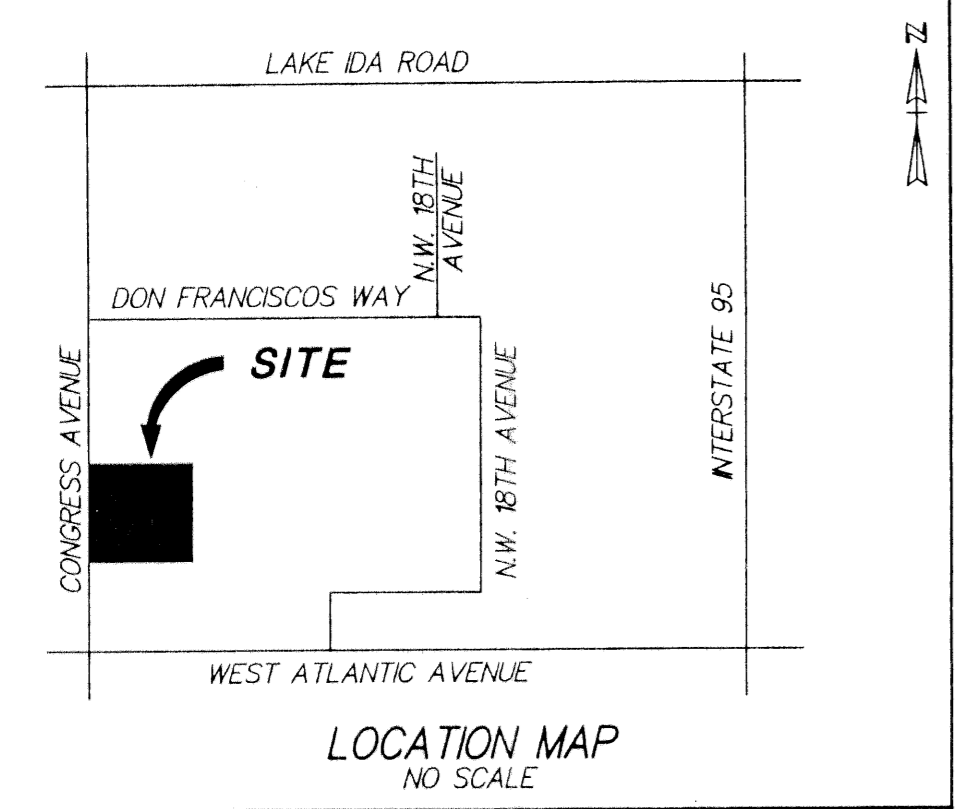
BEING A REPLAT OF ROYAL COMMERCIAL PARK OF DELRAY (PLAT BOOK 64, PAGE 151) SECTION 18, TOWNSHIP 46 SOUTH, RANGE 43 EAST, CITY OF DELRAY BEACH, PALM BEACH COUNTY, FLORIDA.

JUNE 2002
SHEET 2 OF 2

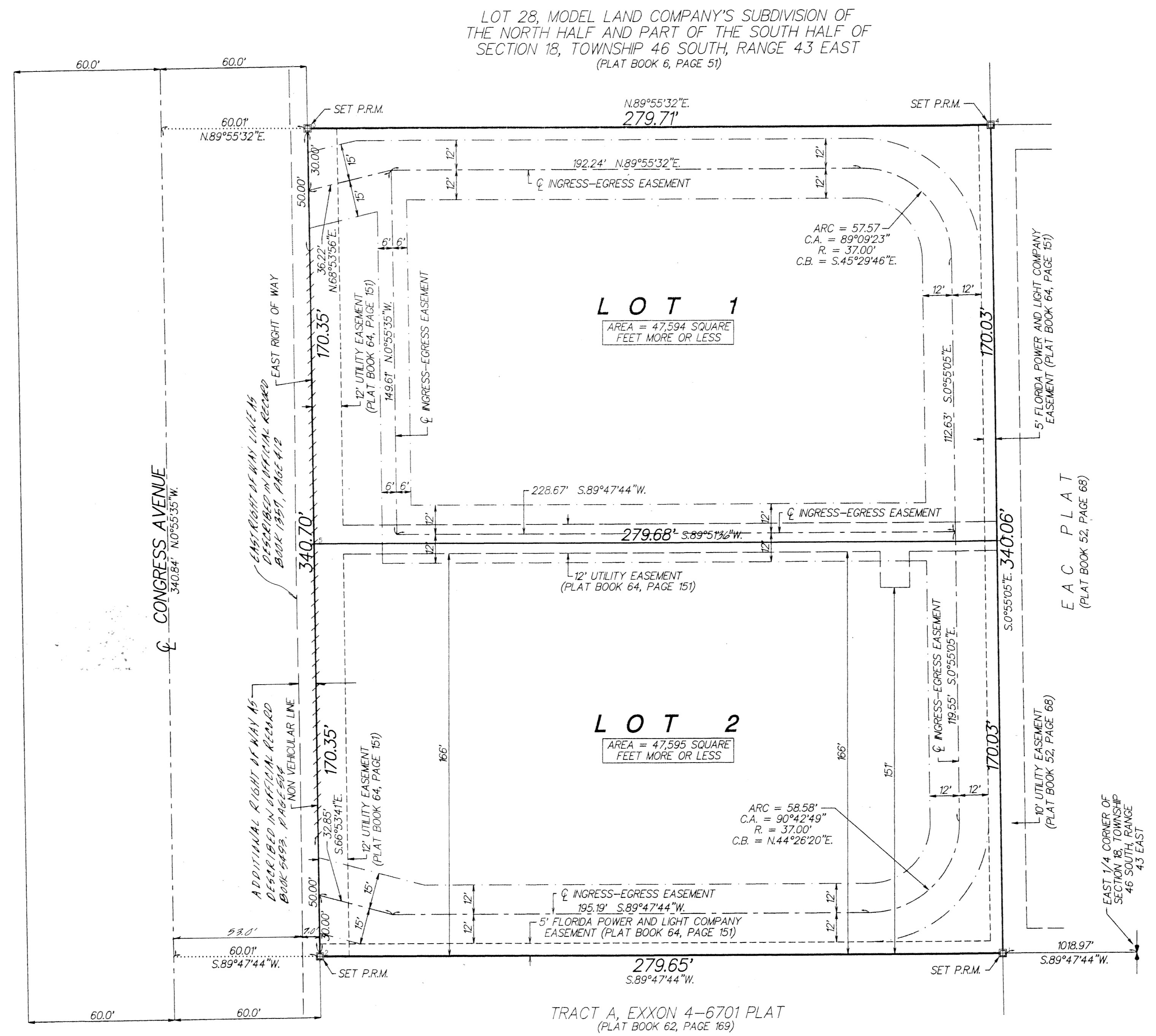


LEGEND:
C = CENTERLINE
PRM = PERMANENT REFERENCE MONUMENT (4"x4") STAMPED "PRM 353"
C.A. = CENTRAL ANGLE
R. = RADIUS
C.B. = CHORD BEARING

COUNTY OF PALM BEACH
STATE OF FLORIDA
THIS PLAT WAS FILED FOR RECORD AT _____
THIS _____ DAY OF _____
20____, AND DULY RECORDED IN PLAT BOOK NO. _____
ON PAGE _____
DORTHY H. WILKEN, CLERK OF CIRCUIT COURT
BY _____ D.C.



NOT PLATTED



LOT 28, MODEL LAND COMPANY'S SUBDIVISION OF THE NORTH HALF AND PART OF THE SOUTH HALF OF SECTION 18, TOWNSHIP 46 SOUTH, RANGE 43 EAST (PLAT BOOK 6, PAGE 51)

TRACT A, EXXON 4-6701 PLAT (PLAT BOOK 62, PAGE 169)